

C O L O U R C H A R T  
A I R L E S S C O L O R ®



2 0 2 3



**BIOTIC PHOCEA**  
Laboratoires

# Choosing Airless Color®

means choosing quality and safety.



EYEBROWS  
AND MICROBLADING

**04 – 21**



EYE LINER

**22 – 23**



LIPS

**24 – 34**



FRECKLES  
AND BEAUTY SPOTS

**35**



SCALP  
MICROPIGMENTATION

**36 – 41**



AREOLAS  
AND SCARS

**42 – 48**



SCARS  
AND STRETCH MARKS

**49**



CORRECTORS

**50 – 55**



SUBLIM'INK

**56 – 57**

# Airless Color®

## The sterile multiuse pigment

---

Manufactured in a controlled atmosphere in certified laboratory ISO 9001, EN13485 and GMP, Airless Color® pigments are the result of a precise blend of organic and mineral pigments, which are subject to rigorous controls: analysis of heavy metals and aromatic amines. They are in perfect conformity with the recommendations of Europe and French legislation, one of the most rigorous in the world.

The Airless Color® pigment is easy to use thanks to an ultra-precise pump and remains sterile between each use.

Without preservatives or petrochemical products, Airless Color® pigments are adapted to the skin's pH and Vegan.

Airless Color® is available in over 90 colours to guaranty the desired result :

- **Enhanced Eyebrows** (from the lightest to the most sustained tones)
- **Sublime lips** (contouring, shading,...)
- **Eyeliner, kohl, lash-liner** (eyelash densification)
- **Reconstructive micropigmentation:** areolas, scars, vitiligo + a wide range of correctors and anti-oxidants

The purpose of this document is to present all the colours in our range by type of use and to help you make your choice according to the type of skin of your clients and the expected result.

However, it is necessary to keep in mind that the result of a pigmentation does not only depend on the pigment you are going to use, but also on the technique you will perform, the depth of implantation, the lifestyle of your patient (sun exposure, smoking/alcohol consumption, swimming, medication, hormones...), but also on the preparation of the skin and the maintenance of the pigmentation

**Finally, although exhaustive, this document cannot replace a thorough training in colorimetry which will allow you to better understand the choice of colours and techniques.**

**For any request: [formation@biotic.fr](mailto:formation@biotic.fr)**



· cold ·  
PIGMENT



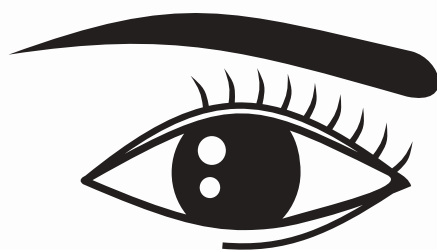
· neutral ·  
PIGMENT



· warm ·  
PIGMENT

# Eyebrows and Microblading





---

Poorly filled in, asymmetrical or absent eyebrows? Whether it is done with a dermograph or with microblading blades, permanent eyebrow make-up allows you to restore balance and harmony to your face in a natural way.

Thanks to our wide choice of colours and textures (specific range for microblading), you will be able to respond to all requests and guarantee the best result to your clients.



## Blondes, light brown and redheads

### LIGHT-SKINNED

Our selection of pigments for blondes, red hair, brown hair with fair skin who do not tan a lot or never and have sunburn easily.

This type of skins tends to warm the pigments

Usually, we advise you to use the antioxidant ST03 to avoid a warm color evolution.

---





### EB33 - Light Cool Brown

Best compromise for the elderly or true blonds with very pale complexion (Nordic type).



### EB41 - Whisky

Ash blond.  
More sustained than the EB33, it is used pure and gives a very natural result.



### EB45 - Samantha Signature®

Light taupe for blond hair.  
Perfect for white skin.

It is used pure.



### EB44 - Miranda Signature®

For dark blond & redheaded skin  
Perfect for white skin.

It is used pure.



### EBO1 - Icy Chestnut Brown

Taupe ash gray, marron glacé, more sustained than the EB41.  
Recommended on blond, light brown and redheaded women.



### EB16 - Almond Brown

Ideal for redheads.  
Will give a dark blond look on blonds.  
To be mixed systematically with 2 drops of ST03.



### EB43 - Carrie Signature®

For dark brown hair, highlighted hair.  
Brown on light skin. Cooler on darker skin.

It is used pure.



### MB10 - Iced Latte

Ash blond for blondes with fair skin.  
It is used pure and gives a very natural result.



### MB06 - Cappuccino

Cold neutral brown.  
Recommended for high-lighted, chestnut and ash brown hair with light skin.



EB41 — 6 drops | DIO1 — 2 drops



MB06



## Blondes and chestnut WITH DARK SKIN

These are blondes and brown hair who have a naturally mate complexion and who sunbathe rather easily.

In some cases, depending on the pigment used and the expected result, it will be necessary to use an anti-oxidant or mix your pigments together.

---





### EB44 - *Miranda Signature*®

For dark blond & redheaded skin  
Perfect for white skin.

It is used pure.



### EB01 - **Icy Chestnut Brown**

Taupe ash gray, marron glacé more sustained than the EB41.  
Recommended on blond, light brown and redheaded women.



### EB25 - **Ombre Brûlée**

Neutral light brown between chestnut and brown. Recommended for chestnut, dark blonds or highlighted hair with ST03.



### EB43 - *Carrie Signature*®

For dark brown hair, highlighted hair.  
Brown on light skin.  
Cooler on darker skin.

It is used pure.



### EB40 - **Tobacco**

Medium chestnut for light chestnuts that will give an ashy taupe result on matt skins.

It is used pure.



EB34 — ST04



EB40 — pur



EB34 | ST04



## Brunette WITH FAIR SKIN

These are light skins that do not tan or tan little despite their chestnut or brown hair

The choice must be made on pigments with a cold tendency.

---





**EBO2 - Dark Ash Grey**

Brown with a cold tendency. It results in an ashy look on black hair and eyebrows of pale skin.

Mix with 2 drops of ST04 if you want a more brown than grey result.



**EBO6 - Smoked Brown**

For black hair and eyebrows, darker than EB02



**EB18 - Ebony Complexion**

Cool dark gray brown  
Add 2 drops of ST04 for a browner result.



**EB42 - Charlotte Signature®**

On light-skinned brunettes, chocolate brown result.

On dark skin, the result is cooler.

It is used pure.



**MB08 - Americano**

Cool-tone brown.

Recommended for dark browns and brunettes.

Can be used pure or mixed with MB04 if you wish to soften it and make it more brown.



**MB03 - Irish Coffee**

Soft cold brown recommended for browns, mix with 2 drops of MB04 to warm it up.



**MB01 - Ristretto**

Strong cool brown is recommended for true brunettes with light skin and black eyebrows.

Always warm up with MB02.



EB18



EBO6 | ST04



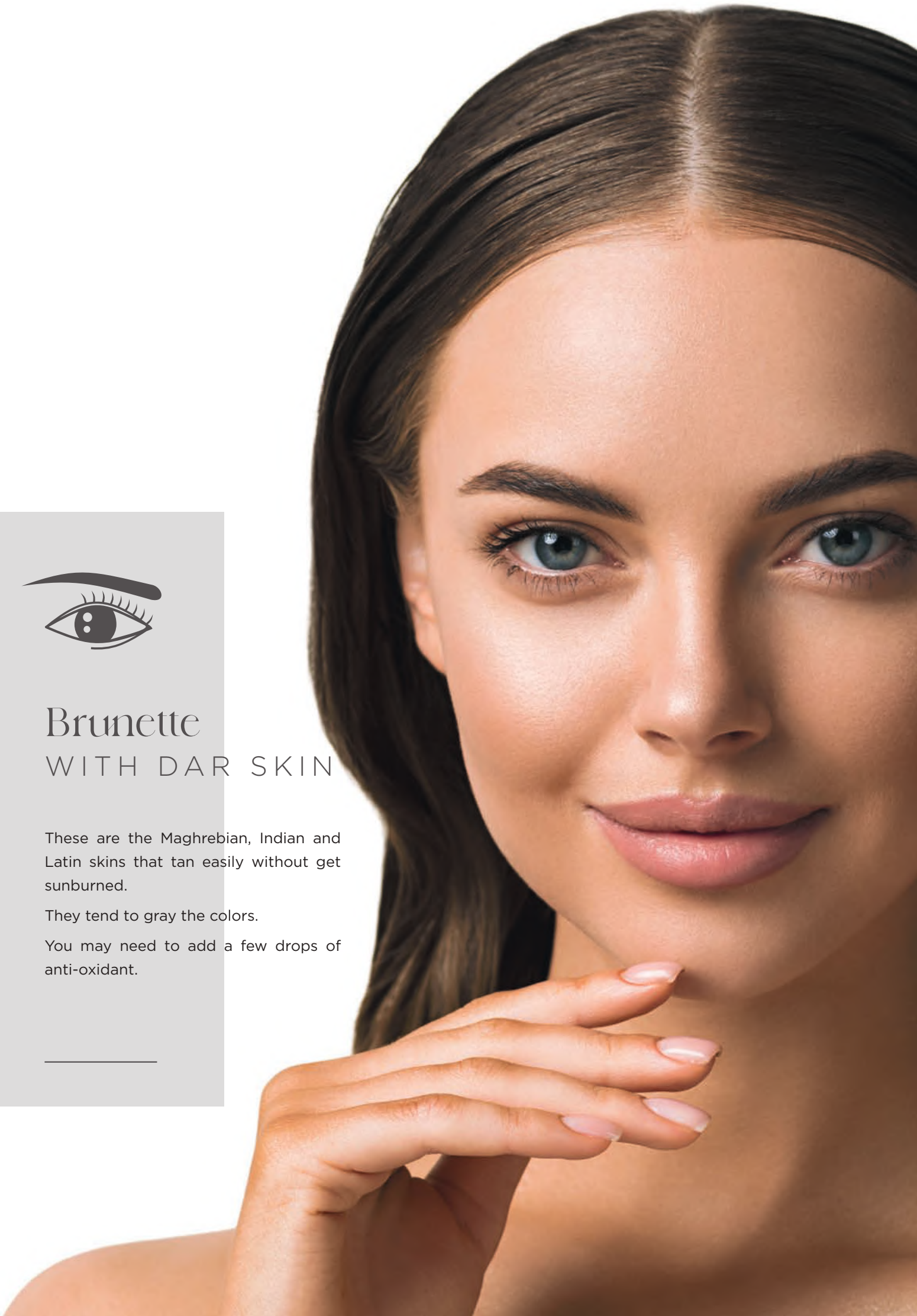
## Brunette WITH DARK SKIN

These are the Maghrebian, Indian and Latin skins that tan easily without get sunburned.

They tend to gray the colors.

You may need to add a few drops of anti-oxidant.

---





**EB09 - Twany Brown**

Medium brown.  
Recommended to be used with ST03 to cool it and for a better hold over time.



**EB19 - Brun Van Dyck**

Pronounced chestnut with a tendency to light warm.  
Add 2 drops of ST03 for a good aging over time.



**EB02 - Dark Ash Grey**

Brown with a cold tendency.  
Gives cold result to be reheated with 2 drops of ST04, for a browner look



**EB42 - Charlotte Signature®**

On light-skinned brunettes, chocolate brown result.  
On dark skin, the result is cooler.

It is used pure.



**EB28 - Moka Base**

Chestnut for a warm brown result.  
Add 2 drops of ST03 for a better hold over time.



**EB08 - Dark Brown**

Dark brown.  
Ideal pigment for dark skin if very dark eyebrows are desired. It results in a dark hair look.



**MB04 - Cioccolata**

Medium warm brown.  
Not to be used alone. Can be cooled with ST03. Perfect for warming a cool base. Recommended for dark chestnut, mixed and Asian complexions.



**MB02 - Espresso**

Advised for brown or chestnut hair with dark skin  
Do not use alone, cool with ST03  
Perfect to warm a cool dark base such as MB01.



**MB08 - Americano**

Brown with a cool tendency.  
Can be mixed with MB04 to soften and increase the brown colour



EB09 — 8 drops | ST03 — 2 drops



EB08

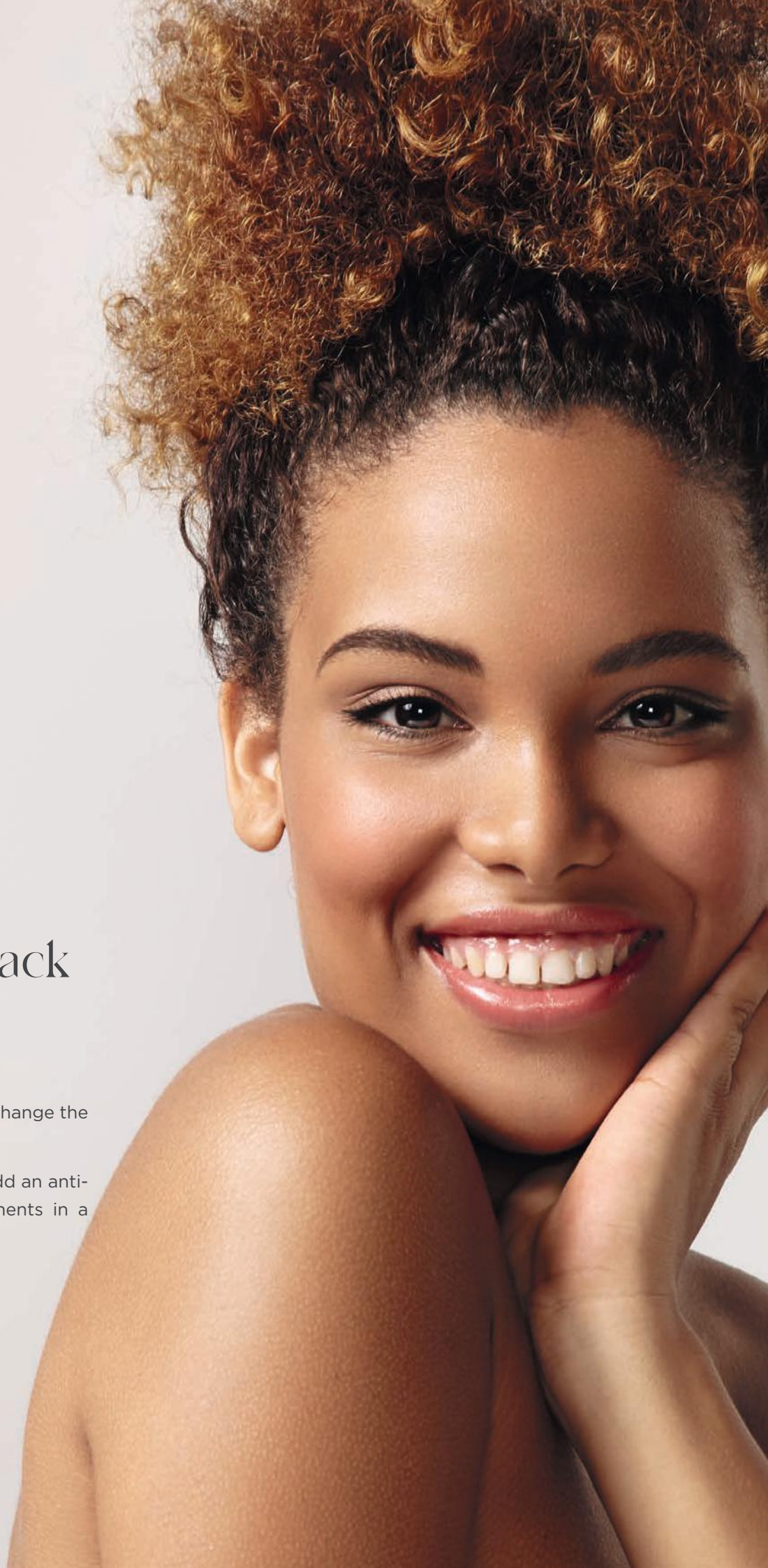


## Metis and black SKINS

Like Dark skins, they tend to change the color toward the cold.

Therefore it is necessary to add an anti-oxidant or to work the pigments in a mixture.

---





**EB09 - Twany Brown**

Advised on metis when the eyebrow isn't too dark.

Hint : You can add 2 drops of ST03, for the lightest metis.



**EB28 - Moka Base**

Chestnut for a warm brown result. Add 2 drops of ST03 for a better hold over time.



**EB19 - Brun Van Dyck**

Medium chestnut. Add 2 drops of ST03 for a good aging over time.



**EB42 - Charlotte Signature®**

On light-skinned brunettes, chocolate brown result.

On dark skin, the result is cooler.

It is used pure.



**EB08 - Dark Brown**

This pigment is ideal when the client wants a dark eyebrow that does not turn



**EB32 - Darkest Cool Brown**

Sustained cold brown. Always use with the EB28 or ST04, never use pure.



**MB02 - Espresso**

Deep warm brown  
Do not use alone, cool with ST03  
Perfect to warm a cool dark base such as MB01.



**MB01 - Ristretto**

Deep cool brown. Always warm up with the MB02.



EB08 — pur



EB32 | ST04



## Grey-haired

This is a selection of pigments for people with salt and pepper hair, regardless of age or skin type.

It will therefore be necessary to add an anti-oxidant if necessary.



### EB41 - Whisky

For people who do not want a grey eyebrow despite their salt and pepper hair.

For darker skin, it should be mixed with 2 drops of ST04



### EB45 - Samantha Signature®

Light taupe for blond hair.  
Perfect for white skin.

It is used pure.



### EB44 - Miranda Signature®

For dark blond & redheaded skin  
Perfect for white skin.

It is used pure.



### EB11 - Grey Seal

Mouse gray. Also very natural for men

#### HINT

This pigment is much more pronounced in the days following pigmentation but then becomes clearer on healing.







## Asian SKINS

Asian skins cool the colours.

We therefore advise you to use a warm pigment.



### EB09 - Twany Brown

Medium chestnut can be used undiluted on darker skins and with ST03 for pale skins.



### EB19 - Brun Van Dyck

Ideal for Asian skins for a more sustained result than the EB09.

Add 2 drops of ST03 for a good aging over time.



### EB42 - Charlotte *Signature*®

On light-skinned brunettes, chocolate brown result.

On dark skin, the result is cooler.

It is used pure.



### EB08 - Dark Brown

This pigment is ideal when the client wants a dark eyebrow that does not turn grey.





## ANTI-oxidants

To get the best results, anti-oxidants are the pigments essential to your range.

To be used on people who have not yet had any pigmentation. Mixed with your base pigment, they allow to assure a better aging of the color depending on the skin type of your client

---



### ST01 - Brow Lightener

Neutral beige used to lighten the eyebrows. The number of drops depends on the desired lightening effect.

#### DOSAGE

*Mix up to 50% to reduce overall colour tone*

#### TIPS

*Add 1 to 2 drops for fixing pigments on oily skin.*

*Do not use with a warm pigment*

---



### ST03 - Orange Brow Stop

Recommended for redheads and pale skin and for people whose natural eyebrow is already warm for a better hold over time avoiding the oxidation of warm pigments.

#### DOSAGE

*Add 2 drops to 8 drops of the eyebrow colour.*

---



### ST04 - Brow Grey Stop

Recommended on black, dark, Asian and North-African skin and eyebrows that are already cool for a better hold over time.

#### DOSAGE

*Add 2 drops for 8 drops of eyebrow pigment during the first pigmentation.*

---





# SUMMARY OF EYEBROW COLOURS

Blondes,  
light browns and  
redheads light-skinned



-  |  EB33  
**Light Cool Brown**
-  |  EB41  
**Whisky**
-  |  EB45  
**Samantha - Signature®**
-  |  EB44  
**Miranda - Signature®**
-  |  EBO1  
**Icy Chesnut Brown**
-  |  EB16  
**Almond Brown + ST03**
-  |  EB43  
**Carrie - Signature®**

MICROBLADING

-  |  MB10  
**Iced Latte**
-  |  MB06  
**Cappuccino**

Brown  
and dark brown  
light-skinned



-  |  EB02  
**Dark Ash Grey**
-  |  EB06  
**Smoked Brown**
-  |  EB18  
**Ebony Complexion + ST04**
-  |  EB42  
**Charlotte - Signature®**

-  |  MB08  
**Americano**
-  |  MB03  
**Irish Coffee**
-  |  MB01  
**Ristretto**

MICROBLADING

Blondes and chestnut  
with dark skin



-  |  EB44  
**Miranda - Signature®**
-  |  EBO1  
**Icy Chesnut Brown**
-  |  EB25  
**Ombre Brûlée + ST03**
-  |  EB43  
**Carrie - Signature®**
-  |  EB40  
**Tobacco**

Eyebrow Collection  
*Signature®*



-  |  EB45  
**Samantha - Signature®**
-  |  EB44  
**Miranda - Signature®**
-  |  EB43  
**Carrie - Signature®**
-  |  EB42  
**Charlotte - Signature®**

## Dark skinned brunettes dark



		EB09 <b>Twany Brown</b> + ST03
		EB02 <b>Dark Ash Grey</b> + ST04
		EB28 <b>Moka Base</b> + ST03
		EB19 <b>Brun Van Dyck</b> + ST03
		EB42 <b>Charlotte - Signature®</b>
		EB08 <b>Dark Brown</b>

		MB04 <b>Cioccolata</b> + ST03
		MB02 <b>Espresso</b> + ST03
		MB08 <b>Americano</b>

MICROBLADING

## Black skin and mixed race



		EB09 <b>Twany Brown</b> + ST03
		EB28 <b>Moka Base</b> + ST03
		EB19 <b>Brun Van Dyck</b> + ST03
		EB42 <b>Charlotte - Signature®</b>
		EB08 <b>Dark Brown</b>
		EB32 <b>Darkest Cool Brown</b> + ST04

		MB02 <b>Espresso</b> + ST03
		MB01 <b>Ristretto</b>

MICROBLADING

## Grey haired



		EB41 <b>Whisky</b> + (ST04 peaux mates)
		EB45 <b>Samantha - Signature®</b>
		EB44 <b>Miranda - Signature®</b>
		EB11 <b>Grey Seal</b>

## Asian skin



		EB09 <b>Twany Brown</b> + ST03
		EB19 <b>Brun Van Dyck</b> + ST03
		EB42 <b>Charlotte - Signature®</b>
		EB08 <b>Dark Brown</b>

# Eye-liner



## ELO3 - Warm Black

Smoky brown.

Recommended for green, brown, blue and hazel eyes. Works well as an eye-lash-liner.



## TA13 - Charcoal

Black.

Never put TA13 in the eyebrows.

### TIPS

*For an intense carbon black over the long term, use a mixture of 50% TA13 - 50% EB28*



## ELO1 - Lilas

Recommended for green, brown, blue or hazel eyes.



## EL16 - Olive

Recommended for brown and hazel eyes.



Highlight the look by choosing from our eyeliner and kohl colours that will enhance the eyes. These colours can also be used for small body tattoos.

EYE-LINER



TA13 + EB28 - 4 drops

# Lips



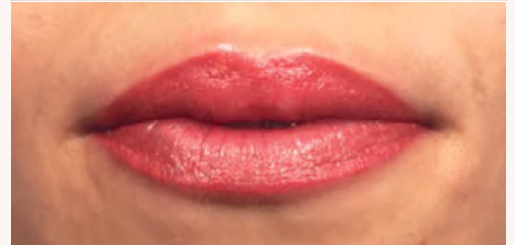




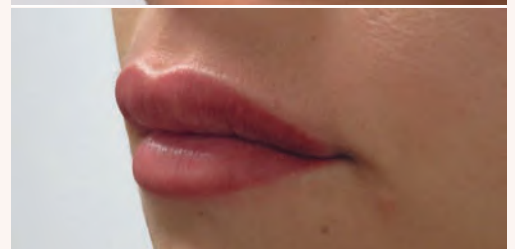
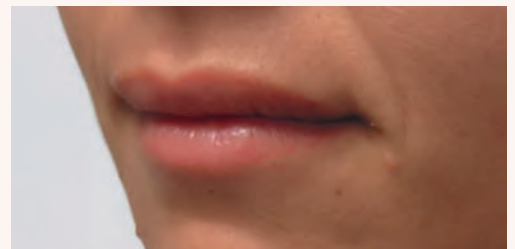
BIOTIC Phoccea offers a range of very varied colours for lips with mucous colours for the lips reconstruction, but also more subdued colours for a gorgeous makeup effect.



reddish  
TONES



LP56 — *pur*



LP58 — *pur*



### LP12 - Port-Wine Red

Brick Red. Recommended on brown and chestnut with dark mucous membranes for a natural pinkish-brown result.

Toujours l'utiliser avec l'Illuminateur.

We advise to mix a few drops of LPO2 for filling



### LPO2 - Wild Strawberry

Red-brown, mediterranean mucous membrane colour. Always use it with the Illuminator.

#### TIPS

Mix with LP23 to darken it a little



### LP41 - Laque de Venise

Bright red.

Remains red on the clear mucous membranes. Has a tendency to turn pink on cold mucous membranes but remains luminous over time.

Perfect for curling to even out the mucosa. Also ideal for shading without a relatively strong contour.

Do not add Illuminator.

#### TIPS

Ideal as a filler for the violet lips of smokers who regain a natural colour.



### LP56 - Tosca

Orange red.

Brightens lips on medium to dark mucous membranes. Natural effect for blurring cold mucous membranes.

#### TIPS

ideal for lightening and turning pink dark mucous membranes (North African and black skin).



### LPO8 - Ultimate Red

Bright red.

It stays red on light lips.

It tends toward pink on cold lips, but stays bright.

Do not add Illuminator.



### LP63 - Sangria Signature®

Intense brick red.

Ideal for a bright result.

Lipstick effect on light lips. Softer on dark lips.



### LPO4 - Cherry Rose

Red for a sustained result.

Do not add Illuminator.



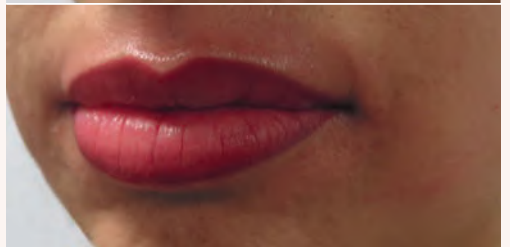


Pinkish  
TONES

---



**LP59** — 8 drops | **ILO1** — 2 drops



**LP53** — 8 drops | **ILO1** — 2 drops



### LP52 - Amber Rose

Very natural mucous pink. Also very beautiful in a mixture to lighten all roses. Always use with Illuminator.



### LP57 - American Pink

Light Fuschia  
Can be used undiluted on cold mucous membranes. Do not turn bluish. Always use with Illuminator.



### LP61 - Ultimate Pink

Natural light pink. Long lasting natural light pink.  
Allows a natural result while bringing color. Always use with Illuminator.



### LP11 - Old Rose

Cold pale pink, super natural. Can be use for male mucous membranes. Always use with Illuminator.



### LP53 - Pretty Pink

Flashy effect on clear mucous membranes and very luminous on dark mucous membranes. Always use with Illuminator.



### LP62 - Cosmopolitan *Signature*<sup>®</sup>

Intense pink with dazzling color to radiate and awaken the lips of your most daring clients. Intense on light lips for a «lipstick» color effect.  
Softer on medium mucous membranes. Natural rendering on darker mucous membranes.



### LP59 - Real Pink

Real Pink. Creates an intense effect on light mucous membranes and a powdery effect on medium mucous membranes and a natural effect on dark mucous membranes  
Add illuminator on cool mucous membranes





Browny  
TONES

---



**LP29 - Santal**

Sustained cold Rosewood.  
Always mix with the illuminator.



**LP58 - Terracotta**

Very luminous rosewood.  
Beautiful and modern look.  
Natural on dark mucous membranes,  
resulting in intense warm lips.



**LP40 - Bois de Rose**

Deep rosewood, color between brown  
and pink.  
Recommended for chestnuts and  
browns.  
Always mix with the illuminator.





# Beige TONES



### LP42 - Salmon Pink

Powdery salmon beige very natural effect  
Perfect for lightly blurring and creating a soft powdery look.

Always mix with the illuminator.

#### ASTUCES

*Ideal for lightening other pigments*



### LP64 - Fizz Signature®

Delicate orange beige for clients who want a nude look. Ideal for light mucous membranes. Very natural effect for contour and mucosa.



### LP60 - Nude

Pinky beige very natural on cold lips. It can be used on light and/or warm lips for a more intense result. Always mix with the illuminator.



LP42 – Salmon pink



### LP23 - **Framboisine**

More sustained than the mucous membrane, for Mediterranean mucous membranes when you want a sustained contour.

#### TIPS

*Put 2 drops of illuminator for every 10 drops of LP23.*



Purple  
TONES

---





**LP65 - Spritz Signature®**  
Intense coral that gives a tangy effect to the mucous membranes. Ideal for light and medium mucous membranes.



**LP27 - Light Rose**  
Light but lively saffron-orange well as a base for blondes with light skins and redheads.



**LP09 - Pumpkin Rose**  
Warm coppery coral colour. Advised for people with red and light to dark brown hair. Ideal in mixtures to make a more coppery colour.



Orangy  
TONES

---



**LP09** – *Pumpkin Rose*

# SUMMARY OF COLOURS LIPS

## Reddish tones

		LP12 <b>Port-Wine Red</b> + IL01
		LP02 <b>Wild Strawberry</b> + IL01
		LP41 <b>Laque de Venise</b>
		LP56 <b>Tosca</b> + IL01
		LP08 <b>Ultimate Red</b>
		LP63 <b>Sangria - Signature®</b>
		LP04 <b>Cherry Rose</b> + IL01

## Pinkish tones

		LP52 <b>Amber Rose</b> + IL01
		LP57 <b>American Pink</b> + IL01
		LP61 <b>Ultimate Pink</b> + IL01
		LP11 <b>Old Rose</b> + IL01
		LP53 <b>Pretty Pink</b> + IL01
		LP62 <b>Cosmopolitan - Signature®</b>
		LP59 <b>Real Pink</b> + IL01

## Orangy tones

		LP65 <b>Spritz - Signature®</b>
		LP27 <b>Light Rose</b> + IL01
		LP09 <b>Pumpkin Rose</b> + IL01

## Browny tones

		LP29 <b>Santal</b> + IL01
		LP58 + IL01 <b>Terracotta</b>
		LP40 <b>Bois de Rose</b> + IL01

## Beige tones

		LP42 <b>Salmon Pink</b> + IL01
		LP64 <b>Fizz - Signature®</b>
		LP60 <b>Nude</b> + IL01

## Purple tones

		LP23 <b>Framboisine</b> + IL01
--	--	-----------------------------------

## Lip collection

*Signature®*

		LP64 <b>Fizz - Signature®</b>
		LP65 <b>Spritz - Signature®</b>
		LP62 <b>Cosmopolitan - Signature®</b>
		LP63 <b>Sangria - Signature®</b>

## Freckles

---

On light to intermediate skins



Sur peaux métisses à mates



## Beauty spots

---



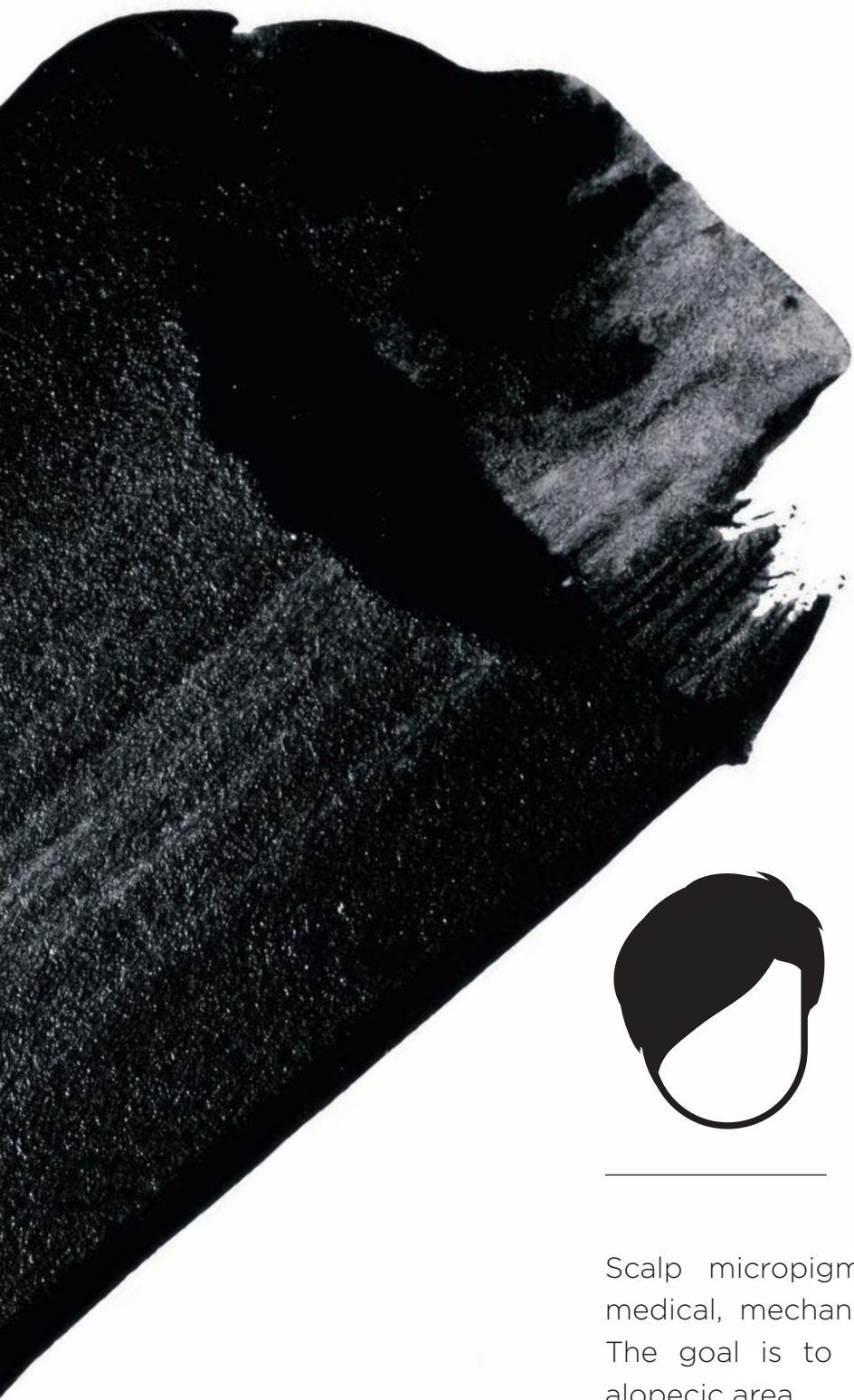
BUT ALSO...  
Freckles  
& beauty spots

---



# Scalp micropigmentation





Scalp micropigmentation allows to hide medical, mechanical or scarring alopecias. The goal is to dissimulate a scar or an alopecic area.

Thanks to this technique, you can give an impression of density on areas where the hair is sparse but also recreate a shaved head effect when the baldness is very advanced or total.



## DENSIFICATION AND SHAVED SKULL

The trichopigmentation pigments for densification are available in different shades identical to the natural hair colours, in order to offer a natural result to your clients.

They can be used to pigment people who want to give their hair a fuller look by filling in sparse areas using the pointillism technique.

---





### HT11 - Blond cendré

The lightest of our trichopigmentation pigments, for blondes and dark blondes.

For use with HT20.

For phototype 1: milky (red) skin, always burns, never tans. Very many freckles.



### HT07 - Châtain Clair

Warm light brown.

On warm skins, add ST03 for a better ageing of the colour over time.

For phototype 1: milky (red) skin, always burns, never tans. Very many freckles.



### HT05 - Châtain

Chestnut.

It is used on chestnut to brown hair, pure on cold skin and mixed with a cold pigment on warm skin.

For phototype 3: light to matt skin, sometimes burns, always tans (medium tan), some freckles.

For phototype 4: fair to matt skin, sometimes burns, always tans (medium tan), some freckles.



### HT06 - Châtain Cendré

Ash brown.

Depending on the phototype, always add ST03 for a better ageing of the colour over time.

For phototype 2: fair skin, always burns, sometimes acquires a slight tan, many freckles.



### HT04 - Châtain Foncé

Dark Chestnut.

For use with the HT20.

For phototype 4: light to matt skin, sometimes burns, always tans (medium tan), some freckles.

For phototype 5: brown skin, never burns, always tans (very dark tan), no freckles.



### HT03 - Brun

Dark brown.

For use with HT20.

For phototype 5: brown skin, never burns, always tans (very dark tan), no freckles.



### HT01 - Brun Froid

Deep brown.

For dark brown to black hair  
To be used with HT20.

For phototype 6: black skin, never burns, no freckles.



### HT20 - Réchauffeur

Warmer. To be used with HT pigments if the colour is too cool, increasing amount if the technique requires more pressure.



### WHO1 - Snowy White

White.



HT07 — 7 drops + HT04 — 3 drops | BOOSTER — 2 drops

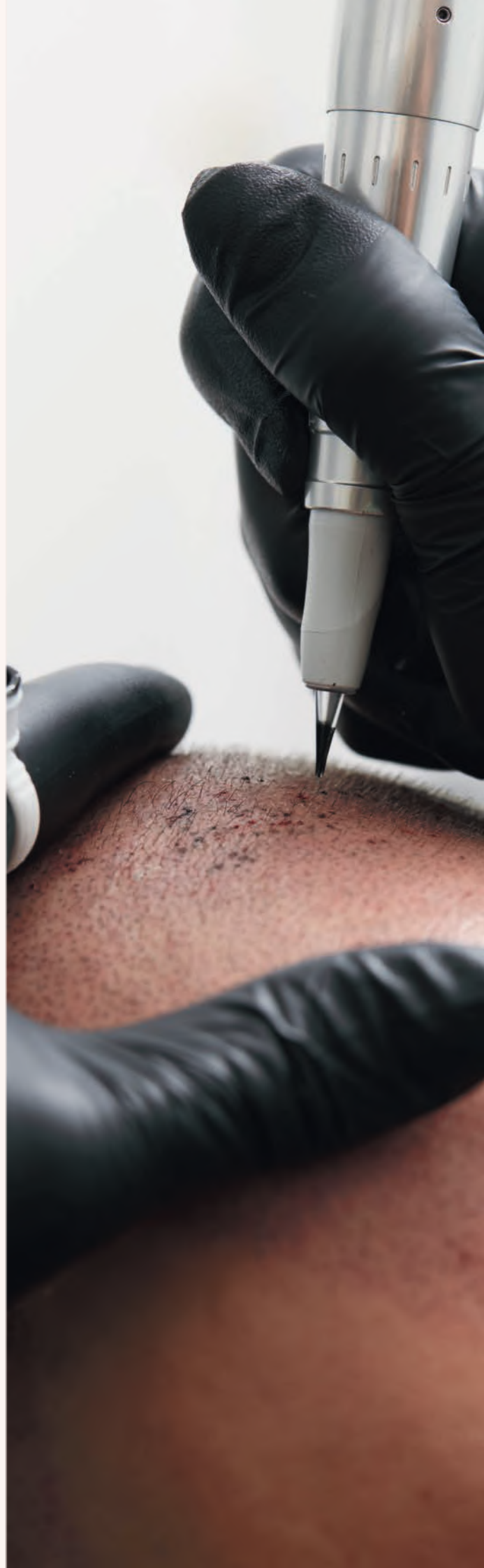


## SHAVED head effect

With this range of pigments you can reproduce a «shaved head» effect on bald scalps. The pointillism technique allows you to imitate the hair follicle and the beginning of hair growth.

It is available in 7 shades of black, more or less diluted to best match the natural colour of your client's follicle, Black03 being the lightest and Black30 the darkest.

---







### HTB03 - Black03

For phototype 1: milky (red) skin, always burns, never tans. Very many freckles.

Type: Caucasian.



### HTB15 - Black15

For phototype 3: light to matt skin, sometimes burns, always tans (medium tan), some freckles.

Types: Caucasian, Middle Eastern, Asian and South American.



### HTB30 - Black30

For phototype 6: black skin, never burns, no freckles.

Types: South American and African.



### HTB05 - Black05

For phototype 1: milky (red) skin, always burns, never tans. Very many freckles.

Type: Caucasian.



### HTB20 - Black20

For phototype 3: light to matt skin, sometimes burns, always tans (medium tan), some freckles.

For phototype 4: light to matt skin, sometimes burns, always tans (medium tan), some freckles.

Types: Asian and South American.



### HTB10 - Black10

For phototype 2: fair skin, always burns, sometimes acquires a slight tan, many freckles.

Types: Caucasian, Middle Eastern, Asian and South American.



### HTB25 - Black25

For phototype 4: light to matt skin, sometimes burns, always tans (medium tan), some freckles.

For phototype 5: brown skin, never burns, always tans (very dark tan), no freckles.

Types: Asian and South American.



HTB05

# Areolas and scars





BIOTIC Phocea laboratories specialized in medical dermopigmentation offer a wide range of colours for the pigmentation of areola to avoid making mixtures.

And because every skin is different, BIOTIC Phocea laboratories have created a wide range of «chair» colors.



# Pinkish AREOLAS

---



## LP52 - Amber Rose

Very natural mucous pink.  
Also very beautiful in a mixture to lighten  
all roses.



## LP29 - Santal

Sustained cold rosewood for the areolas  
pinkish-brown

### TIPS

*Lighten with AR10 if it is too dark.*



## LP11 - Old Rose

Cold pale pink mixed with AR10, to give  
a pinkish touch to dark pink nipples



## LP04 - Cherry Rose

Red.  
Red recommended for nipples with a red  
tendency.



AR10 | AR12 | LP52 | WH01



# beige

## AREOLAS

---



### AR08 - Venus Complexion

Light beige white for white skins.

Always use in combination with AR10 or the WH01 for a better color ageing over time

#### ASTUCES

*Ideal for stretch marks : 4 drops of AR08 + 4 drops of white with 3 drops of diluent*



### AR18 - Peach Complexion

Light peach beige trend slightly warm.

Use on pink skins always mixed with AR10.



### AR10 - Pink Ocher

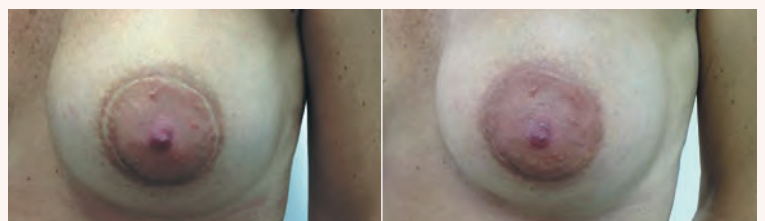
Cold pinkish beige for fair skins.

Use as a base for light and pink areolas on skin types that will have a tendency to warm up a colour, to avoid oxidation of the pigment over time.



### AR20 - Light Turtledove

Hot Beige very light for scars of very white skins in mixture with AR10 or white for very white skins.



AR10 | AR18



# Brown AREOLAS

---



## AR24 - Dark Taupe

Cold brown taupe, ideal for correcting pink or orange areolas. Advised for fair skins when mixed with AR10.



## AR11 - Caribbean Skin

Warm brown. To be used on matt or metis that will tend to cool the implanted colours.

### TIPS

*In combination with AR10, it is possible to have beige from lightest to darkest.*



## AR23 - Chocolate Brown

Deep brown darker than AR11. Use for metis and black skins.

### TIPS

*For the areolas of very dark black skins, mixed with 2 to 3 drops of EB32.*



## EB08 - Dark Brown

Dark brown for the areolas of the metis and black skins, when the areola is very dark.



## EB32 - Darkest Cool Brown

Dark ashy brown to make the AR23 darker and get a dark areola for metis and black skins



AR10 | AR11



# Orange

## AREOLAS

---



### AR12 - Rosewood Complexion

Light beige warm trend.  
For the lightest of Mediterranean skins.

#### TIPS

*Mixed with AR10 to lighten it if necessary.*



### AR15 - Venitian Brown

Orange beige, to be mixed with AR10 for  
redheads and light skins.

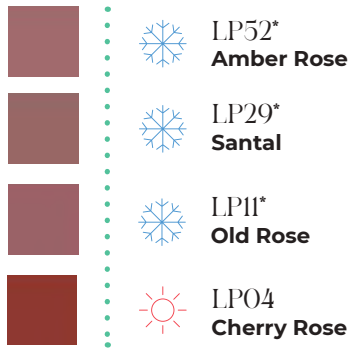
#### TIPS

*Ideal for freckles, also in combination  
with white or with ST03 if it doesn't need  
to be cleared up. Do not use it pure*



# SUMMARY OF AREOLA COLOURS

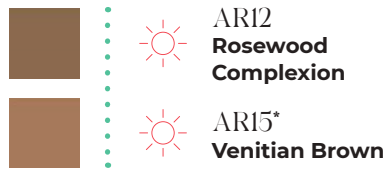
## Pink areolas



## Beige areolas



## Orange areolas



## Brown areolas





# SCARS & STRETCH MARKS



## Tips for each service:

For stretch marks, always add 5 drops of thinner

For scars, always add 3 drops of thinner



### AR08 - Venus Complexion

Very light beige for white skin.

To be used in combination with AR10 or WH01 for a better ageing of the colour over time.

#### TIPS

*Ideal for stretch marks: 4 drops of AR08 + 4 drops of white with 3 drops of thinner.*



### AR10 - Pink Ocher

Cool pinkish beige for fair skin.

Can be used for scars or mixed with WH01 to lighten a colour too dark for scars or stretch marks.



### AR20 - Light Turtledove

Very light warm beige for scars on very white skin mixed with AR10 or white for whiter skin.



### AR18 - Peach Complexion

Light peachy beige with a warm tendency. Can be used on white and pink skins always mixed with AR10.



### AR12 - Rosewood Complexion

Light beige with a warm tendency. For the lightest Mediterranean skins.

#### TIPS

*To be used with ST03 or AR10 for good ageing over time.*



### AR11 - Caribbean Skin

Warm brown. To be used on dark or mixed skins which will tend to cool down the implanted colours.

#### TIPS

*When mixed with AR10, it is possible to have a lighter to darker beige depending on the proportions of the mixture.*



### AR23 - Chocolate Brown

Darker brown than AR11. For use on black and mixed race skin

#### TIPS

*For very dark skin, mix with 2 to 3 drops of EB32.*



# Correctors





Used to camouflage or correct a color that has oxidized to a gray or blue, correctors are essential pigments to meet the needs of each of your clients who are not satisfied with the evolution of their pigmentation.

Correctors should only be used on zones that have already been pigmented.



## CORRECTORS eyebrows

---



### CC00 - **Banana**

Purple eyebrow corrector.

#### RESULT

*The purple is absorbed. Immediately after correction, the desired colour can be pigmented.*



### CC01 - **Orange Corrector**

Orange eyebrow corrector.

#### RESULT

*The orange is absorbed. The eyebrow takes on a chestnut colour.*



### CC02 - **Pink Corrector**

Correction of pink eyebrows

#### RESULT

*The pink is absorbed. The eyebrow takes on a brown colour.*



### CC03 - **Grey Eyebrow Corrector**

Grey eyebrow corrector.

#### RESULT

*The grey is absorbed. The eyebrow takes on a chestnut colour.*



### CC10 - **Mango**

Eye-brow and bluish lip corrector for white skins

For eyebrows, use to cover the old pigmentation with a light support, then pigment immediately afterwards with the desired colour.



## CORRECTORS

# lips

---



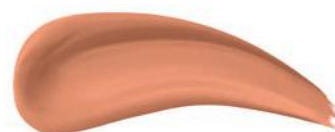
### CC05 - Blue Corrector

Blue lip correction for black skin.

#### TIPS

*Apply to a contour that has changed colour.*

*The blue is absorbed, the colour takes on a cherry colour.*



### CC10 - Mango

Blue lip corrector for white skin. For lips, no need to pigment with another colour afterwards. It will give a nude orange result.



### CC11 - Fragola

Corrector for grey lips. To be used over the old pigmentation. No need to re-pigment with another colour.

#### RESULT

Will give a pinkish colour.



COLOURS  
Flesh

---



**CC06 - Neutral Corrector**

Warm neutral corrector.

Dilute with diluent: 3 to 5 drops for every 10 drops of corrector.



**CC08 - Rosy Corrector**

Skin corrector for pinkish skin. Add 3 to 5 drops of diluent to 10 drops of concealer.



**CC09 - Suntan Corrector**

Skin corrector for pinkish skin. Add 3 to 5 drops of diluent to 10 drops of concealer.



**WH01 - White**

White to lighten a colour.

## COMPLEMENTARY COLOURS



### Pigment Booster

Pigment BOOSTER is added to the pigment (*2 drops of Pigment BOOSTER for 8 drops of pigment*).

Pigment BOOSTER allows a better pigment retention over time in the skin.



### Allergy Test

The universal allergy test for all BIOTIC Phocea pigments. Make a painless test point behind the ear: wait one month to check the good tolerance of the product. Do not risk pigmenting patients with an allergic background.



### II.01 - Lips illuminator

Used to warm lip colours and increase luminosity. Not required for very red or bright colours such as LP08 and LP41

Add 2 drops of illuminator to 8 drops of pigment



### DI - Sterile diluent

Designed to lighten a colour without altering its shade. It can be used in a mixture with all BIOTIC Phocea colours



### Dermo C+

Facilitates dermopigmentation and softens the passage of the pen. Thanks to its hyaluronic acid content, the skin is intensely nourished & hydrated.



# SUBLIM'INK

## Preparation and care of the pigmentation

Because a successful **permanent make-up** does not only depend on the pigment

---

Successful permanent make-up that lasts over time requires a great deal of care and precaution. Before the pigmentation, the skin must be prepared to receive the tattoo for an optimal assimilation of the pigment. After the pigmentation, the fragile skin must be cleaned with a soft product and the tattoo must be protected to prevent it from losing its shine.

Because a well-prepared skin will better assimilate the pigment, and because a well-maintained permanent

make-up will remain stable and radiant over time, BIOTIC Phocœa has developed a complete range of preand post-pigmentation care products.

Vegan, created from natural ingredients, without mineral oils (vaseline, paraffin), these products protect



The steps for lasting pigmentation...

## In institute

### PRE-PIGMENTATION

---

1



**Exfoliate** with **Face Hydrating Scrub** (50 ml)  
99% natural origin

2



**Cleansing** with **Micellar Water** (200 ml)  
99% natural origin

### DURING PIGMENTATION

---

3



**Pigmenting** with the **Pigment Booster**  
99% natural origin

4



**Cleaning** with **Gentle cleansing foam** (50 ml)  
99% natural origin

5



**Facilitate** dermopigmentation and the passage of the pen with  
**Dermo C+ (10 ml)**  
100% natural origin

6



**Fix** with **Agent F** (30 ml)

### DURING PIGMENTATION

---

7



**Soothing and healing** lips with **Nutri-Cream** (50 ml)  
and eyebrows with the **Cicabrows +** (10 ml)  
100 & 92% natural origin

## Then at home

### POST-PIGMENTATION

---

1



**Cleaning** with **Gentle cleansing foam** (50 ml)  
99% natural origin

2



**Soothing and healing** lips with **Nutri-Cream** (4 ml)  
and the **Cicabrows +** (10 ml)  
100 & 92% natural origin

3



**Care** with **Eyelash & Eyebrow Booster Care** (9 ml)  
and the **Gloss Réparateur Sublim'Lips+** (6 ml)  
100 & 99% natural origin







**BIOTIC  
PHOCEA**  
Laboratoires

**Laboratoires Biotic Phoccea**

16-18 boulevard Michelet, 13008 Marseille (France)  
[www.biotic.fr](http://www.biotic.fr)

**SALES DEPARTMENT**

+33 (0)4 91 53 54 00  
[info@biotic.fr](mailto:info@biotic.fr)